

# 2021

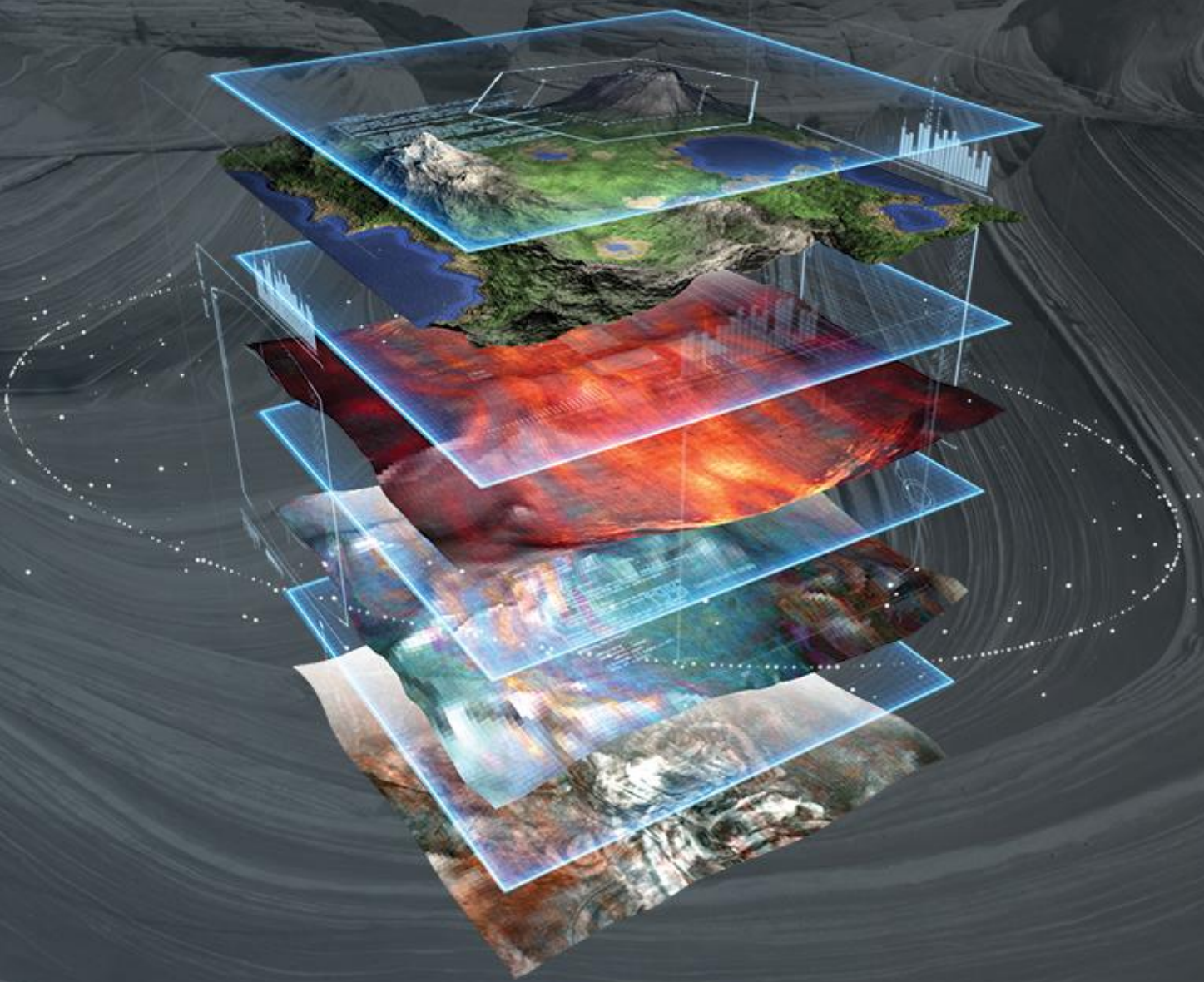
---

# PALEOSCAN™

---

PATCH NOTES

2021.2.1



Integrated Seismic Interpretation Software





## Copyright Notice

All rights reserved. No part of this document may be reproduced, stored in a retrieval system, or translated in any form or by any means, electronic or mechanical, including photocopying and recording, without the prior written permission of Eliis SAS, 3 Rue Jean Monnet, 34830 Clapiers, FRANCE.

## Disclaimer

The use of this product is governed by the PaleoScan™ Software License Agreement. Eliis makes no warranty, expressed, implied, or statutory, with respect to the product described herein and disclaims without limitation any warranty of merchantability or fitness for a particular purpose. Eliis reserves the right to revise the information in this manual at any time without notice.

## Contact

For any information request, you can contact us.

Web: [www.eliis-geo.com](http://www.eliis-geo.com)

---

Europe - Montpellier  
Eliis SAS

[contact@eliis.fr](mailto:contact@eliis.fr)  
+33 (0) 4.67.41.31.16

North America - Houston  
Eliis Inc.

[contactus@eliis.fr](mailto:contactus@eliis.fr)  
+1 281 404 1515

Australia - Perth  
Eliis Pty Ltd

[contactau@eliis.fr](mailto:contactau@eliis.fr)  
+61 466 303 546

---

Malaysia – Kuala Lumpur  
Eliis Sdn Bhd

[contactmy@eliis.fr](mailto:contactmy@eliis.fr)  
+60 162 072 710

Brazil – Rio de Janeiro  
Eliis Ltda

[contactbr@eliis.fr](mailto:contactbr@eliis.fr)  
+55 (21) 99575-0071

---

# Table of Contents

---

PALEOSCAN™ 2021.2.1	4
NEW FEATURES & IMPROVEMENT	5
MAINTENANCE	5
LICENSING	7
PROJECT COMPATIBILITY	7
HARDWARE REQUIREMENTS	7

# PaleoScan™ 2021.2.1

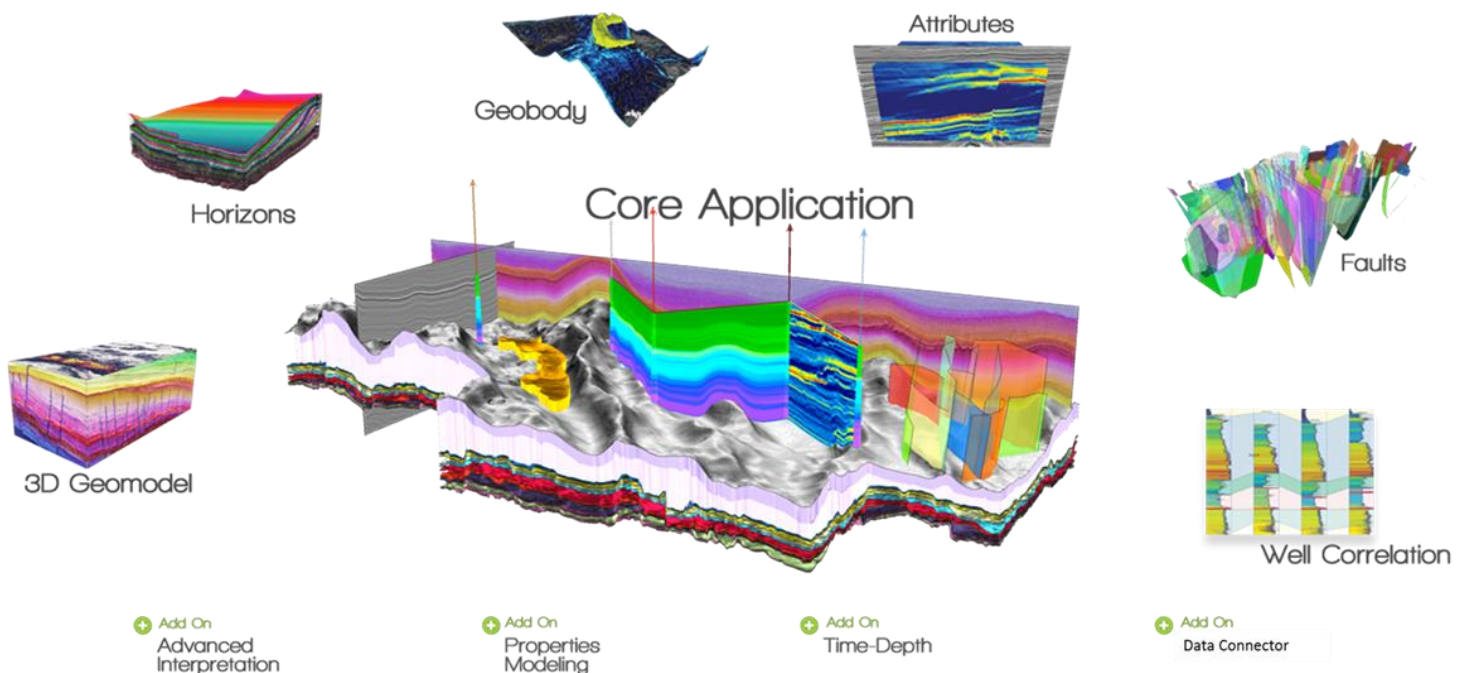
PaleoScan™ is a new generation of 3D seismic interpretation software, where geoscientists build a geological model while interpreting seismic volumes. With this new release, Eliis continues to innovate in seismic interpretation and brings more tools to interpret larger seismic datasets, with added speed and precision.

The 2021.2.0 version includes all updates counted in the last version and features, new and improved tools, for a better support of data constraints.

- The **new AVO attributes** are available (R squared, Synthetic Angle Stack, Envelope Far Near Far),
- The **Envelope Derivative 1<sup>st</sup> & 2<sup>nd</sup>** have been added to the attributes related to Volume, 2D Line, Horizon and Horizon Stack Attributes - Real time for Volumes and 2D Line,
- The **Amplitude Balancing** tool is available in Volume module list,
- The **Polarity attribute** was enriched with the display of real values,
- The **new Smoothing** options are available,
- The **Optimization** on different tools is available
- The **Visualization and Interface** of different parts are available
- The **OpenWorks®** Data Link is improved in this version.

i

This document lists all the new features and upgrades implemented in PaleoScan™ 2021.2.1. A detailed description of each tool can be found in the “User Guide” or on the web site ([www.eliis-geo.com](http://www.eliis-geo.com)).



## New Features & Improvement

Feature	Description
Attribute Real Time	Real time attributes are now classified by attribute type and alphabetic order.
3D Attribute	Thinning attribute preview has more consistent window size values
2D Attribute	The name of saved real-time on 2D Line is now taking the attribute label
Well	Well import as shapefile has been completed with KB elevation and KB unit as optional information
Platform	The tooltip background colour was changed to be more consistent with the dark mode display setting

## Maintenance

Feature	Description
Horizon Stack import	Mapped data on exported Horizon stack is now preserved at the horizon import
3D Horizon Import	Fix incorrect Horizon import where coordinates were not associated to the correct data values
Well Import	Enhance the well import by preserving the updated information in the different fields in case of switching between multiple wells
Data Exchange	Remote icon is now correctly updated when overwriting existing volume
3D Fault Export	Improve the warning message in the Message window in case of not exported fault
Color Bar	Color Bar renaming is now working
3D Viewer	Fix issue where the 3D viewer was displaying object from closed viewer
3D Viewer	Interval values selection on Color Bar is now working correctly for 3D viewer
2D Line Set	Fix issue related to 2D Line Set creation when 2D Line has no value. Now, these values are not taken into account when Normalization option is used
2D Line Set	Output name for 2D Line Set extraction was updated to be consistent with other dialogs
2D Line Set	For Real Time attributes, the Color spectrum is now correct for all the intersections

<b>Arbitrary Line</b>	Fix crash related to arbitrary line Along Well display
<b>Channel Blending</b>	Fix issue on saved horizon after using channel blending. Now the saved colors from blending are well restored
<b>Data Mapping</b>	Fix issue related to data mapping on 2D line from GeoModel where Color Bar was not correct
<b>3D Horizon</b>	Fix regression introduced on Interpolation and Propagation tools. The options are now working
<b>3D Horizon</b>	Fixed crash on 3D Viewer when editing 3D Horizons
<b>3D Horizon Stack</b>	Enable the deletion of Horizon Stack created from cross-plot
<b>3D Horizon Stack</b>	Fix corruption of Horizon Stack when using space at the end of the name
<b>Isochore</b>	Fix isochore calculation error when computed on superimposed geobodies
<b>Geobody</b>	Fix issue on the domain of Geobody extraction. Now when extracting from Horizon Stack in Depth, the Geobody is also in Depth
<b>Geobody Classification</b>	Fix issue on exported values for Geobodies in Depth domain where volumetric were not accurate
<b>GeoModel</b>	Fix domain object compatibility on 3D GeoModel creation. Now a domain check is done to accept Volumes and Horizons with the same domain only and avoid computation issue
<b>GeoCellular</b>	Clear warning message when trying to assign color bar to GeoCellular grid
<b>Spectral Decomposition</b>	Fix issue on the Frequency which was not well updated when changing input volume
<b>Time Depth Conversion</b>	Improve warning messages in the Message Window and the Domain Conversion dialog for better understanding of converted faults
<b>Well-Tie</b>	Fix crash on Seismic-Well Tie while editing CRS project
<b>Well-Tie</b>	Removing duplicated values when saving Time-Depth of Seismic-Well Tie
<b>Well Marker</b>	Fix issue on the well marker display in log viewer when vertical unit was different from TWT. Now the original unit is correctly displayed with markers
<b>Log Viewer</b>	Fix log display issue where maximum value was not well-displayed
<b>Log Viewer</b>	Fix issue on incorrect color display on log area when zoom-in or zoom-out
<b>Session</b>	Fix issue on the restoration of Strati Viewer in the same saved state
<b>Session</b>	Fix incorrect color display in the session preview for restored session
<b>Python Plug-in</b>	Fix crash on Python plug-in imported from folders with special characters
<b>OpenWorks®</b>	Fix crash on the volume transfer from OpenWorks® to PaleoScan™

# Licensing

---

PaleoScan™ 2021 can be downloaded from the [Eliis web site](#). A personal user account is required. If you do not have a login and password to access to the Eliis extranet, you can apply for one by completing this [form](#).

Eliis provides you a free 30-day temporary license to evaluate PaleoScan™ 2021. The temporary license will give you full access to the software with all add-on modules.

# Project Compatibility

---

The PaleoScan™ platform is compatible with all PaleoScan™ projects.

**Forward compatibility:**

Projects saved with previous versions of PaleoScan™ can be updated to PaleoScan™ 2021 when the projects are being loaded.

**Backward compatibility:**

Projects created with PaleoScan™ 2021 can also be opened with previous versions (2020 or 2019). However, some new object properties might not be readable by earlier versions.

# Hardware Requirements

---

PaleoScan™ is a Microsoft Windows® stand-alone software, running on PC equipped with a 64-bit processor with the minimum requirements equivalent to the below mentioned items:

- CPU: 6-Core
- RAM: 16 GB
- Operating System: Windows® 7, 8 or 10 (64-bit)
- Graphic card: 512 MB NVIDIA® / ATI® graphic card
- IDE devices: Hard disk with fast rotational speed (> 7200 rpm)